

## SAMPLE SUBDIVISION

### COMPANY NAME

CLIENT NAME

CLIENT NUMBER

CLIENT EMAIL

REFERENCE # :

DATE

**NET BALANCE:**

**14.683 IMPORT (CY)**

**GRADED AREA:**

**41.70 (AC)**

**1,816,553 (SF)**

**SUMMARY**

Name	Area (SF)				Raw Volumes (CY)		Comp/Ratio		Compact (CY)		Net	Balance(CY)
	Total(SF)	Cut(SF)	Fill(SF)	OnGrade(SF)	Cut(CY)	Fill(CY)	Cut	Fill	Cut(CY)	Fill(CY)	Balance(CY)	Change / .1'
Phase 4	597,036	252,673	304,962	39,401	14,935	17,810	1.00	1.00	14,935	17,810	2,875 Import	2,210
Phase 5	1,219,517	711,394	482,283	25,840	144,407	156,215	1.00	1.00	144,407	156,215	11,808 Import	4,517
<b>Site Total</b>	<b>1,816,553</b>	<b>964,067</b>	<b>787,245</b>	<b>65,241</b>	<b>159,342</b>	<b>174,025</b>	<b>1.00</b>	<b>1.00</b>	<b>159,342</b>	<b>174,025</b>	<b>14,683 Import</b>	<b>6,727</b>

Subgrade Sections	Plane Area(SF)	Slope Area(SF)	Depth (FT)	Volume (CY)
PH4 AC Paving at Lanes	10,814	10,823	1.200	481
PH4 AC Paving at Neighborhood S	44,202	44,222	1.200	1,965
PH4 AC Paving at Railroad Ave	34,006	34,022	2.200	2,772
PH4 AC Paving at Turner Ave	27,372	27,411	2.200	2,233
PH4 PCC Driveway Approach	10,902	10,921	1.000	403
PH4 PCC Sidewalk	29,545	29,553	1.000	1,105
PH5 AC Paving at Jack Tuso Dr	38,171	38,187	2.200	3,111
PH5 AC Paving at Lanes	5,477	5,481	1.200	244
PH5 AC Paving at Neighborhood S	42,663	42,683	1.200	1,897
PH5 AC Paving at Turner Ave	21,945	21,945	2.200	1,788
PH5 PCC Driveway Approach	11,784	11,802	1.000	437
PH5 PCC Sidewalk	28,100	28,106	1.000	1,049
<b>Total</b>	<b>304,981</b>	<b>305,156</b>		<b>17,485</b>

Removal Items	Plane Area(SF)	Slope Area(SF)	Depth (FT)	Volume (CY)
None				

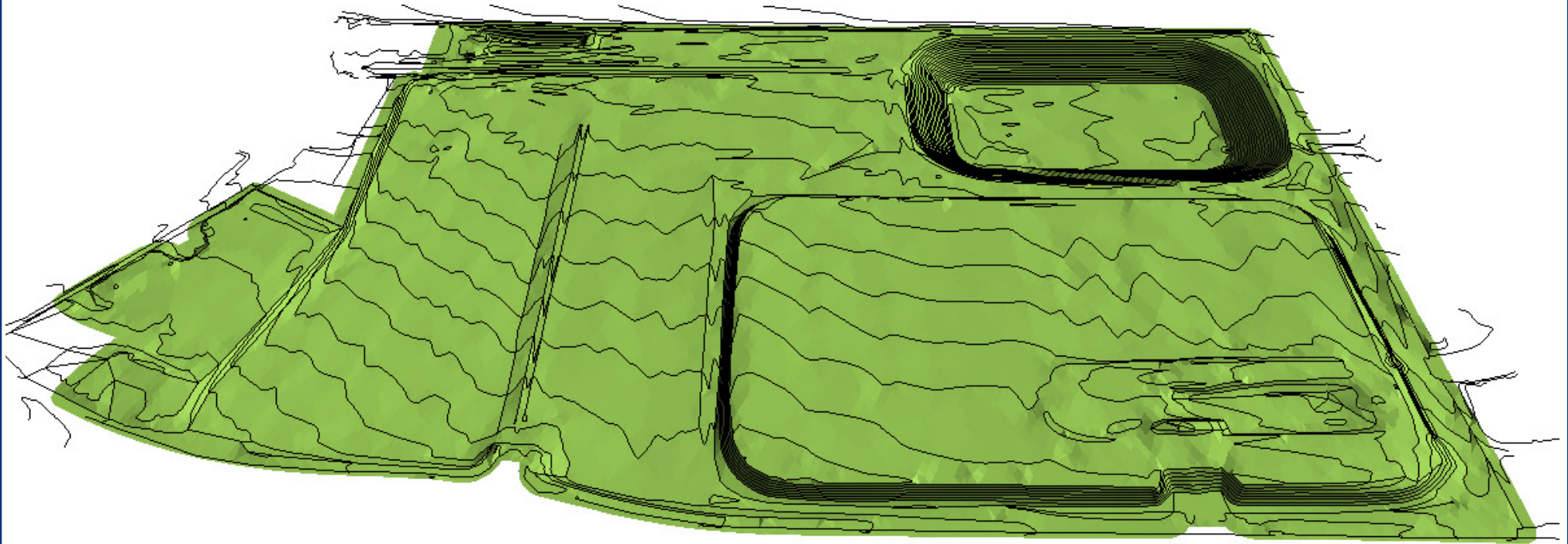
Notes
<p><b>Existing Layer:</b> Data calculated from the following file(s):</p> <ul style="list-style-type: none"> <li>1725_GARDENS-4 GP_2022-06-10.pdf, Sheet 4</li> </ul> <p><b>Design Layer:</b> Data calculated from the following file(s):</p> <ul style="list-style-type: none"> <li>1725_GARDENS-4 GP_2022-06-10.pdf, Sheets 6-9</li> </ul> <p><b>Subgrade Sections:</b></p> <ol style="list-style-type: none"> <li>PH4 AC Paving at Lanes: 0.25'/0.95' (Sheet 3 of 11)</li> <li>PH4 AC Paving at Neighborhood St: 0.25'/0.95' (Sheet 3 of 11)</li> <li>PH4 AC Paving at Railroad Ave: 0.40'/1.80' (Sheet 3 of 11)</li> <li>PH4 AC Paving at Turner Ave: 0.40'/1.80' (Sheet 3 of 11)</li> <li>PH4 PCC Driveway Approach: 6"/6" (City of Tracy Std Plan 133/134)</li> <li>PH4 PCC Sidewalk: 6"/6" (City of Tracy Std Plan 122/124/126)</li> <li>PH5 AC Paving at Jack Tuso Dr: 0.40'/1.80' (Sheet 3 of 11)</li> <li>PH5 AC Paving at Lanes: 0.25'/0.95' (Sheet 3 of 11)</li> <li>PH5 AC Paving at Neighborhood St: 0.25'/0.95' (Sheet 3 of 11)</li> <li>PH5 PCC Driveway Approach: 6"/6" (City of Tracy Std Plan 133/134)</li> <li>PH5 PCC Sidewalk: 6"/6" (City of Tracy Std Plan 122/124/126)</li> </ol>

**Removal Items:**  
No Demolition or Stripping was calculated.

Name	Area (SF)				Raw Volumes (CY)		Comp/Ratio		Compact (CY)		Net		Balance(CY)
	Total(SF)	Cut(SF)	Fill(SF)	OnGrade(SF)	Cut(CY)	Fill(CY)	Cut	Fill	Cut(CY)	Fill(CY)	Balance(CY)	Change / .1'	
PH4 Lots 001-012	70,115	18,786	47,854	3,475	646	2,672	1.00	1.00	646	2,672	2,026	Import	260
PH4 Lots 013-026	70,232	23,305	42,454	4,473	381	3,549	1.00	1.00	381	3,549	3,168	Import	260
PH4 Lots 027-031	35,071	14,704	13,419	6,948	218	1,440	1.00	1.00	218	1,440	1,222	Import	130
PH4 Lots 032-039	41,679	6,480	33,903	1,296	320	1,419	1.00	1.00	320	1,419	1,099	Import	154
PH4 Lots 040-047	43,871	26	43,770	75	0	3,757	1.00	1.00	0	3,757	3,757	Import	162
PH4 Lots 048-055	44,145	725	43,110	310	13	2,568	1.00	1.00	13	2,568	2,555	Import	164
PH4 Lots 056-058	21,145	6,344	7,737	7,064	140	83	1.00	1.00	140	83	57	Export	78
PH4 Lots 059-064	35,975	21,585	11,856	2,534	779	841	1.00	1.00	779	841	62	Import	133
PH4 Lots 065-072	46,277	6,264	34,042	5,971	75	718	1.00	1.00	75	718	643	Import	171
<b>Subtotal:</b>	<b>408,510</b>	<b>98,219</b>	<b>278,145</b>	<b>32,146</b>	<b>2,572</b>	<b>17,047</b>	<b>1.00</b>	<b>1.00</b>	<b>2,572</b>	<b>17,047</b>	<b>14,475</b>	<b>Import</b>	<b>1,512</b>
PH4 ST Granger Street	33,341	16,742	13,816	2,783	1,291	374	1.00	1.00	1,291	374	917	Export	123
PH4 ST Lane 1	15,434	7,714	6,079	1,641	352	254	1.00	1.00	352	254	98	Export	57
PH4 ST Railroad Avenue	59,993	54,564	4,233	1,196	4,242	78	1.00	1.00	4,242	78	4,164	Export	222
PH4 ST Turner Avenue	48,818	48,559	47	212	5,002	1	1.00	1.00	5,002	1	5,001	Export	181
PH4 ST Vinolli Place	30,940	26,875	2,642	1,423	1,476	56	1.00	1.00	1,476	56	1,420	Export	115
<b>Subtotal:</b>	<b>188,526</b>	<b>154,454</b>	<b>26,817</b>	<b>7,255</b>	<b>12,363</b>	<b>763</b>	<b>1.00</b>	<b>1.00</b>	<b>12,363</b>	<b>763</b>	<b>11,600</b>	<b>Export</b>	<b>698</b>
PH5 Lots 047-053	38,881	182	38,565	134	2	9,136	1.00	1.00	2	9,136	9,134	Import	144
PH5 Lots 054-062	59,106	89	58,980	37	2	17,769	1.00	1.00	2	17,769	17,767	Import	219
PH5 Lots 063-070	45,796	31,232	11,943	2,621	3,865	440	1.00	1.00	3,865	440	3,425	Export	170
PH5 Lots 071-082	62,939	36,412	26,447	80	9,185	17,479	1.00	1.00	9,185	17,479	8,294	Import	233
PH5 Lots 083-094	63,057	33,883	28,877	297	8,325	18,925	1.00	1.00	8,325	18,925	10,600	Import	234
PH5 Lots 095-101	35,670	30,864	4,533	273	5,848	186	1.00	1.00	5,848	186	5,662	Export	132
PH5 Lots 102-108	39,116	25,329	9,479	4,308	4,498	163	1.00	1.00	4,498	163	4,335	Export	145
<b>Subtotal:</b>	<b>344,565</b>	<b>157,991</b>	<b>178,824</b>	<b>7,750</b>	<b>31,725</b>	<b>64,098</b>	<b>1.00</b>	<b>1.00</b>	<b>31,725</b>	<b>64,098</b>	<b>32,373</b>	<b>Import</b>	<b>1,277</b>
PH5 School Site	699,307	453,285	228,473	17,549	84,101	47,386	1.00	1.00	84,101	47,386	36,715	Export	2,590
PH5 ST Augusta Avenue	19,274	19,164	0	110	5,459	0	1.00	1.00	5,459	0	5,459	Export	71
PH5 ST Jack Tusso Drive	65,255	42,359	22,690	206	13,474	13,038	1.00	1.00	13,474	13,038	436	Export	242
PH5 ST Kingsburg Court	5,170	2,372	2,740	58	174	669	1.00	1.00	174	669	495	Import	19
PH5 ST Lane 2	8,013	7,786	186	41	1,788	3	1.00	1.00	1,788	3	1,785	Export	30
PH5 ST Redpath Street	38,176	22,255	15,867	54	7,106	9,217	1.00	1.00	7,106	9,217	2,111	Import	141
PH5 ST Turner Avenue	39,757	6,182	33,503	72	580	21,804	1.00	1.00	580	21,804	21,224	Import	147
<b>Subtotal:</b>	<b>175,645</b>	<b>100,118</b>	<b>74,986</b>	<b>541</b>	<b>28,581</b>	<b>44,731</b>	<b>1.00</b>	<b>1.00</b>	<b>28,581</b>	<b>44,731</b>	<b>16,150</b>	<b>Import</b>	<b>650</b>
<b>Site Total</b>	<b>1,816,553</b>	<b>964,067</b>	<b>787,245</b>	<b>65,241</b>	<b>159,342</b>	<b>174,025</b>	<b>1.00</b>	<b>1.00</b>	<b>159,342</b>	<b>174,025</b>	<b>14,683</b>	<b>Import</b>	<b>6,727</b>

**SAMPLE SUBDIVISION**

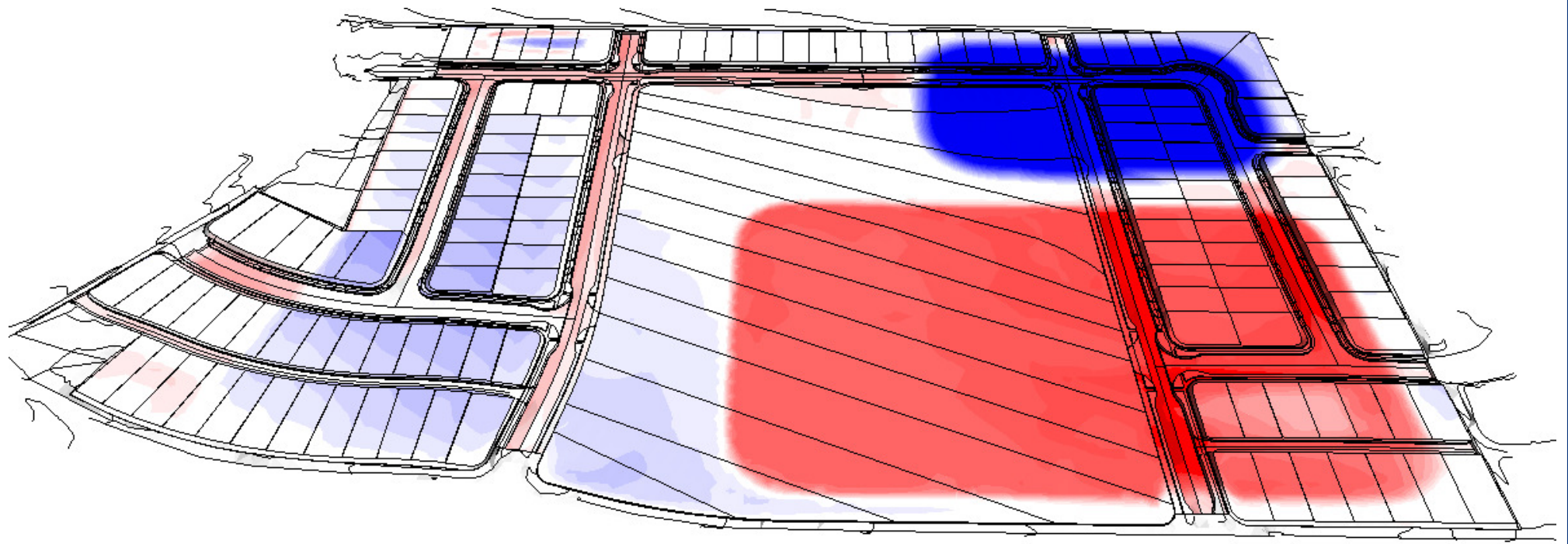
**DETAILS**



**SAMPLE SUBDIVISION**

**EXISTING**

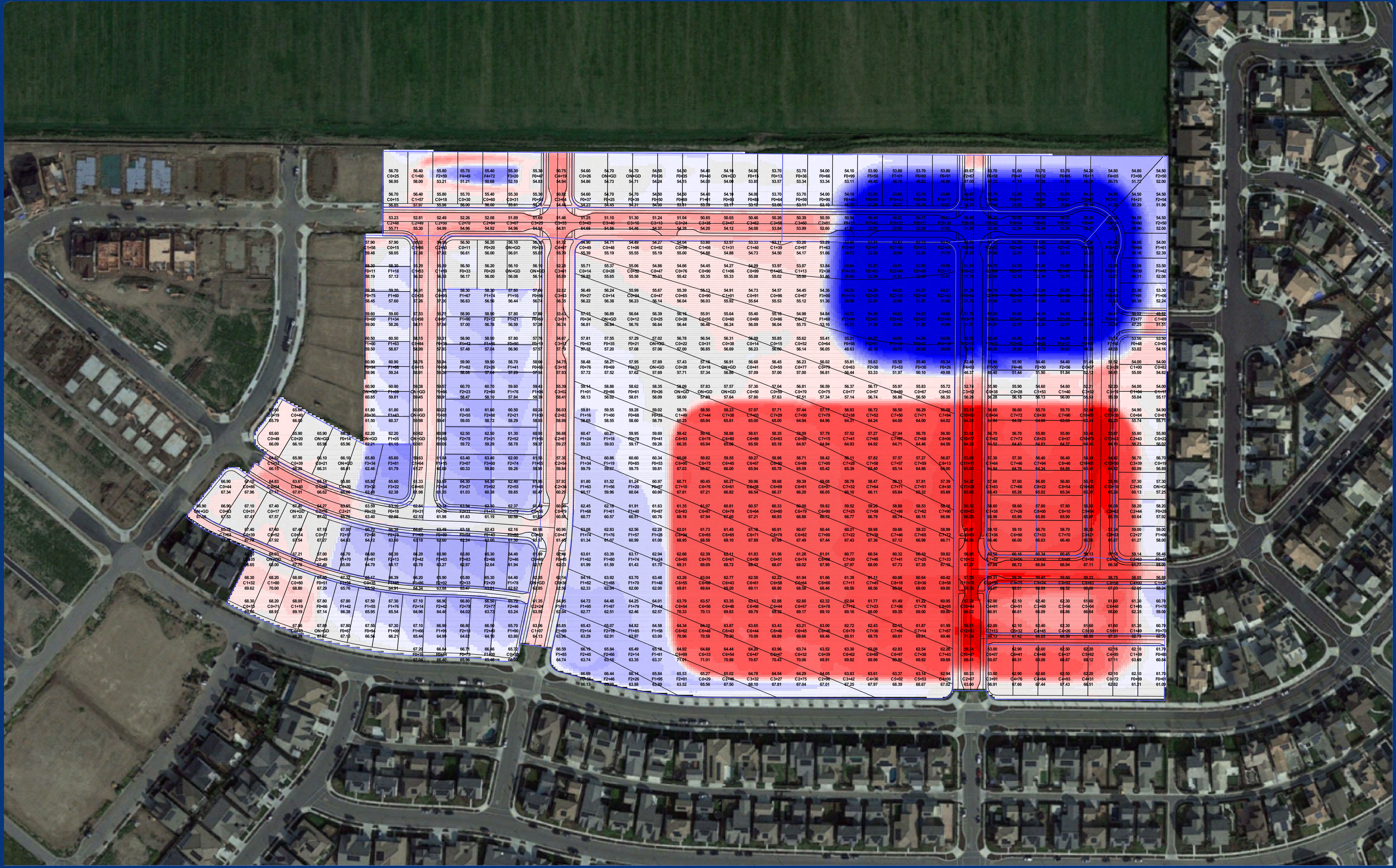




**SAMPLE SUBDIVISION**

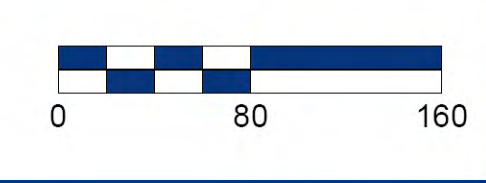
**PROPOSED**





56.70 C0+25	56.40 C1+60	55.80 F2+59	55.70 F4+49	55.40 F4+72	55.30 F3+20	55.30 F0+47	50.75 C4+19	54.80 C0+26	54.70 ON+GD	54.70 ON+GD	54.50 F0+26	54.50 F0+35	54.40 F0+40	54.10 ON+GD	54.00 F0+11	53.70 F0+13	53.70 F0+36	54.00 F0+66	54.10 F5+50	53.80 F7+01	53.70 F6+88	53.80 F0+91	53.70 F2+67	53.60 F4+58	53.70 F6+41	53.70 F6+32	53.80 F6+05	53.70 F6+11	53.80 F4+05	53.70 F3+08	53.80 F2+50
56.95	58.00	53.21	51.21	50.68	52.10	54.83	54.94	54.86	54.73	54.71	54.24	54.15	54.00	54.00	53.85	53.57	53.34	53.11	54.40	53.71	53.80	54.68	53.70	53.60	53.70	53.80	53.70	53.80	53.70	53.80	
56.70	56.40	55.80	55.70	55.40	55.30	55.30	50.75	54.80	54.70	54.70	54.50	54.50	54.40	54.10	54.00	53.70	53.70	54.00	54.10	53.80	53.70	53.80	53.70	53.60	53.70	53.80	53.70	53.80	53.70	53.80	
56.95	57.97	55.98	56.00	56.00	56.81	54.76	54.46	54.23	54.35	54.31	54.00	53.81	53.59	53.11	53.12	53.66	53.41	53.40	54.70	53.45	53.50	54.30	53.70	53.60	53.70	53.80	53.70	53.80	53.70	53.80	
53.23	52.81	52.49	52.26	52.08	51.89	51.69	51.46	51.25	51.10	51.00	51.24	51.04	50.85	50.65	50.46	50.26	50.39	50.59	50.56	50.43	50.22	50.17	50.44	50.46	50.46	50.46	50.46	50.46	50.46	50.46	
55.71	55.30	54.99	54.96	54.92	54.86	54.81	54.81	54.68	54.56	54.46	54.37	54.28	54.20	54.12	54.08	53.84	53.99	52.60	51.40	51.32	51.32	51.32	51.32	51.32	51.32	51.32	51.32	51.32	51.32	51.32	

FEET  
 PROPOSED → 2.00  
 EXISTING → 5.00  
 WADINGS OF  
 2.00 (METERS)  
 5.00 (METERS)  
 DARKER COLORS REPRESENT AREAS OF MAXIMUM FILL  
 DARKER COLORS REPRESENT AREAS OF MAXIMUM CUT  
 CUT/FILL PLAN LEGEND (A FILL OF 0.37 FEET (OR METERS))



# SAMPLE SUBDIVISION

# CUT/FILL MAP